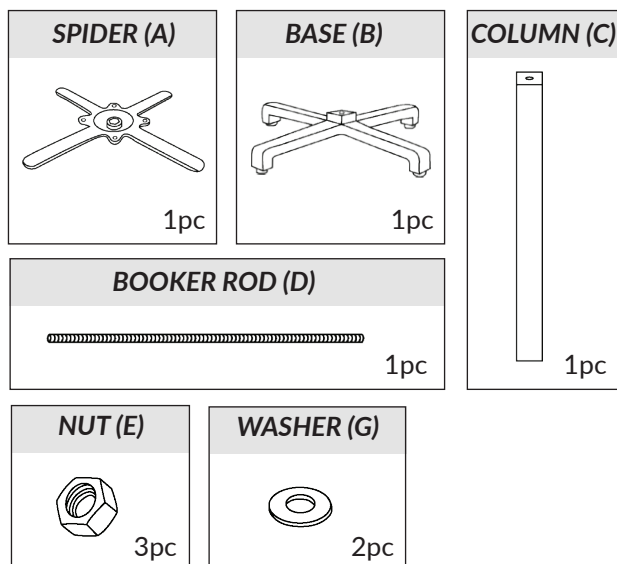
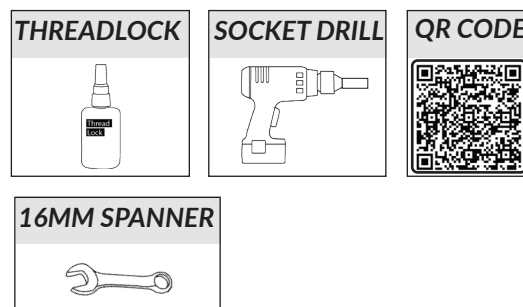


## Table & Drybar Bases

### PARTS:



### TOOLS (NOT INCLUDED):



We strongly recommend applying thread lock to ends of the booker rod and using an socket drill. Scan the QR code with a phone or tablet to access the assembly video.

### WARNING:

Always take care with a socket drill, especially when screwing into the spider (cross member).

### INSTRUCTIONS:

